

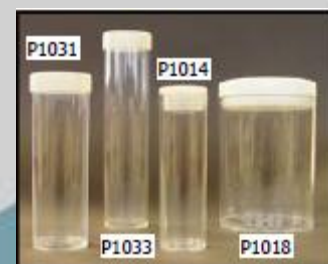
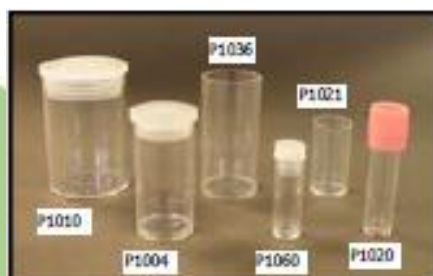


## Plastic Test Tubes

### Material: Polythene



Containers generally available in Polystyrene (PS) but can also be manufactured in Polypropylene (PP) and High Density Polyethylene (HDPE).



REF	LENGTH	DIA	CTN QTY	CAPACITY ml	NOTES	CLOSURE
P1060	31	12	6000	2	FLAT BASE	P0009/1 P0193
P1021	31	18	2500	5	FLAT BASE	P0015
P1025	38	6	14000	0.2	ROUND BASE	N/A
P1020	44	12.5	4000	3	FLAT BASE	P0009/1 P0193
P1049	45	10	4500	2	FLAT BASE SCREW NECK	P5070
P1004	45	24	1000	14	FLAT BASE	P0042
P1009	50	6	8000	0.3	ROUND BASE	P0007
P1046/7	50	18	1500	8	FLAT BASE SCREW NECK	P5065
P1036	50	25	100	17	FLAT BASE	P0238
P1010	51	38	300	43	FLAT BASE	P0030



# REGINA

REGINA INDUSTRIES LTD

P1022	52	7.5	7000	0.7	FLAT BASE	P0131
P1019	52	9	4500	1	ROUND BASE FLANGED NECK	P0008
P1055	53	21	1000	12	FLAT BASE	N/A
P1013	62	48	200	87	FLAT BASE	P0125
P1029	67	31	380	36	FLAT BASE	P5048
P1050	70	16	1000	8	FLAT BASE	P5075
P1016	76	13	2000	5	ROUND BASE	P0009/1
P1017	76	16	1000	9	FLAT BASE	P0013
P1030	77	31	330	42	FLAT BASE	P5048
P1014	80	26	400	29	FLAT BASE	P0025
P1018	83	63	100	208	FLAT BASE	P0126
P1031	89	31	250	49	FLAT BASE	P5048
P1057	100	40	130	96	FLAT BASE	N/A
P1032	107	31	200	59	FLAT BASE	P5048
P1033	122	31	200	67	FLAT BASE	P5048
P1048	127	42	100	120	FLAT BASE SCREW NECK	PXA776
P1034	152	31	150	84	FLAT BASE	P5048